

Masted
trucks

■ **MC 30**

A reliable, productive yard truck

- Capacity 3000 kg
- Lifting height 3 m to 7 m



MC 30: A reliable, productive yard truck

Specially designed for outdoor handling applications, the MC 30 makes managing your storage area easier.

Handle and store with full peace of mind and easily handle and store loads of up to 3 tonnes, even on unconsolidated ground.



• The MANITOU solution for outdoor handling

Ideal for loading lorries and storage yards, the MC 30 makes the operator's life simpler, due to its distinctive features: a wide track for improved stability, a high ground clearance for travelling over kerbs or other obstacles, full visibility, rugged mast for safety, quick and safe cab access, ergonomic controls for improved manoeuvrability, and high travelling speed (24 km/h) for higher efficiency. In addition, because of the stability of the MC 30, the operator can safely access the most unstable areas of the site and quickly put the load into place.

- **The experience of versatile handling**

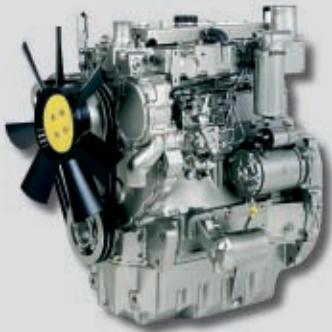
Already widely acclaimed for its unmatched performance, the MC 30 is suited to any kind of handling: in narrow alleys, it proves outstandingly manoeuvrable due to its short turning radius; for storage at a height, it can be fitted with up to 7-metre masts; it has a hydraulic differential lock as standard which allows it to travel through difficult areas.



The MC 30 is indispensable, whatever your activity.

• The assurance of rugged design

The MC 30, and the MC range in general, is the result of continuous interaction between MANITOU's design office and the users. The components have been designed for use in the most arduous conditions.



The Perkins 1104 C 44 – 4-cylinder direct-injection engine has been chosen for its performance and reliability. It develops 84 hp/61.5 kW at the rated speed of 2200 rpm and conforms to the Euro 2 standard. In addition, the MC 30 is fitted with a torque converter transmission and a 4-ratio gearbox, so that the user can choose between driveability or speed of travel, depending on working conditions.

• The value of easy maintenance

As maintenance is part of the life of a handling truck, the operator has full access to the engine for easy inspection and maintenance. The quality of design of the MC 30 minimizes the risk of downtime, extends the lifetime of the truck, and reduces maintenance costs.



The MC range includes models from 3 to 7 tonnes.






MC 30 Roller masts

| MASTS | | LIFTING HEIGHT ON FORKS (mm) | OVERALL HEIGHT MAST LOWERED (mm) | FREE LIFT ON FORKS (mm) | OVERALL HEIGHT MAST EXTENDED (mm) | HEIGHT AT MAX. CAPACITY (mm) | | CAPACITY AT MAX. HEIGHT (kg) | | MAST TILTING ANGLE Front/Rear |
|--------------------------|--------------------------|------------------------------|----------------------------------|-------------------------|-----------------------------------|------------------------------|-----------------------------|------------------------------|-----------------------------|-------------------------------|
| | | | | | | With side shift carriage | Without side shift carriage | With side shift carriage | Without side shift carriage | |
| DUPLEX TOTAL VISIBILITY | 3.00 m | 3030 | 2460 | 130 | 4045 | 3000 | 3000 | 3000 | 3000 | 6°/12° |
| | 3.30 m | 3330 | 2460 | 130 | 4345 | 3300 | 3000 | 3000 | 3000 | 6°/12° |
| | 3.70 m | 3730 | 2715 | 130 | 4745 | 3700 | 3000 | 3000 | 3000 | 6°/12° |
| | 4.00 m | 4030 | 2905 | 130 | 5045 | 4000 | 3000 | 3000 | 3000 | 6°/12° |
| | 4.50 m | 4530 | 3155 | 130 | 5545 | 4000 | 2800 | 2900 | 2900 | 6°/12° |
| | 5.00 m | 5030 | 3405 | 130 | 6045 | 4000 | 2400 | 2600 | 2600 | 6°/12° |
| DUPLEX FREE LIFT | 3.00 m | 3040 | 2305 | 1383 | 3962 | 3000 | 3000 | 3000 | 3000 | 6°/12° |
| | 3.30 m | 3340 | 2455 | 1533 | 4262 | 3300 | 3000 | 3000 | 3000 | 6°/12° |
| | 3.50 m | 3540 | 2555 | 1633 | 4462 | 3500 | 3000 | 3000 | 3000 | 6°/12° |
| | 3.70 m | 3740 | 2715 | 1793 | 4662 | 3700 | 3000 | 3000 | 3000 | 6°/12° |
| | 4.00 m | 4040 | 2905 | 1983 | 4962 | 4000 | 3000 | 3000 | 3000 | 6°/12° |
| TRIPLEX TOTAL VISIBILITY | 5.50 m Without Free lift | 5545 | 2985 | - | 6655 | 4000 | 1900 | 2100 | 2100 | 6°/10° |
| TRIPLEX FREE LIFT | 3.70 m | 3740 | 2460 | 1283 | 4662 | 3700 | 3000 | 3000 | 3000 | 6°/12° |
| | 4.00 m | 4040 | 2460 | 1383 | 4962 | 4000 | 3000 | 3000 | 3000 | 6°/12° |
| | 4.30 m | 4340 | 2460 | 1533 | 5262 | 4000 | 2900 | 3000 | 3000 | 6°/12° |
| | 4.70 m | 4740 | 2555 | 1633 | 5662 | 4000 | 2600 | 2800 | 2800 | 6°/12° |
| | 5.00 m | 5040 | 2715 | 1793 | 5962 | 4000 | 2400 | 2600 | 2600 | 6°/12° |
| | 5.50 m | 5540 | 2905 | 1983 | 6462 | 4000 | 1900 | 2100 | 2100 | 6°/12° |
| | 6.00 m | 6040 | 3155 | 2233 | 6962 | 4000 | 1600 | 1800 | 1800 | 6°/12° |
| | 6.50 m | 6540 | 3405 | 2483 | 7462 | 4000 | 1200 | 1350 | 1350 | 6°/12° |
| | 7.00 m | 7040 | 3655 | 2733 | 7962 | 4000 | 900 | 1000 | 1000 | 6°/12° |

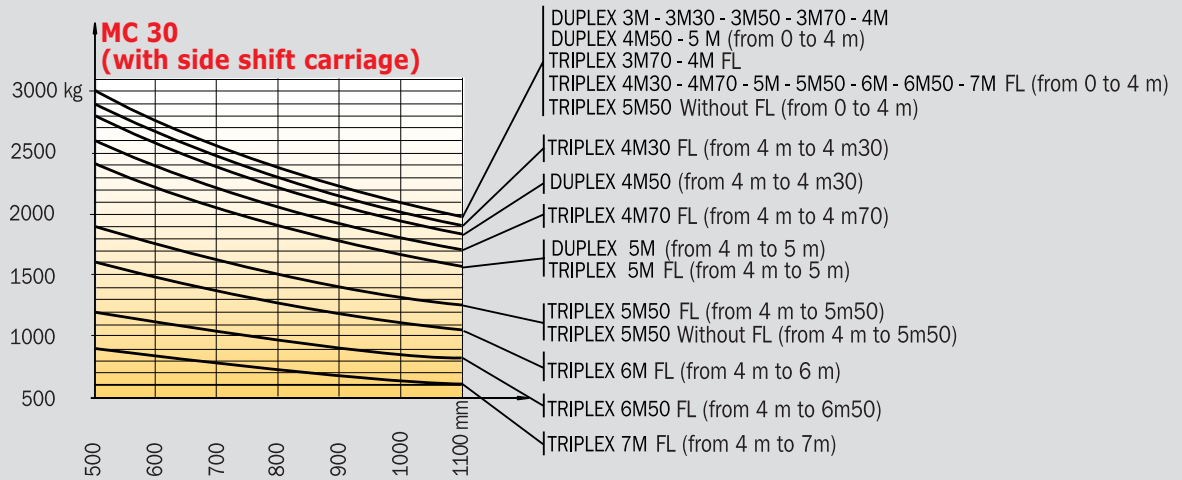
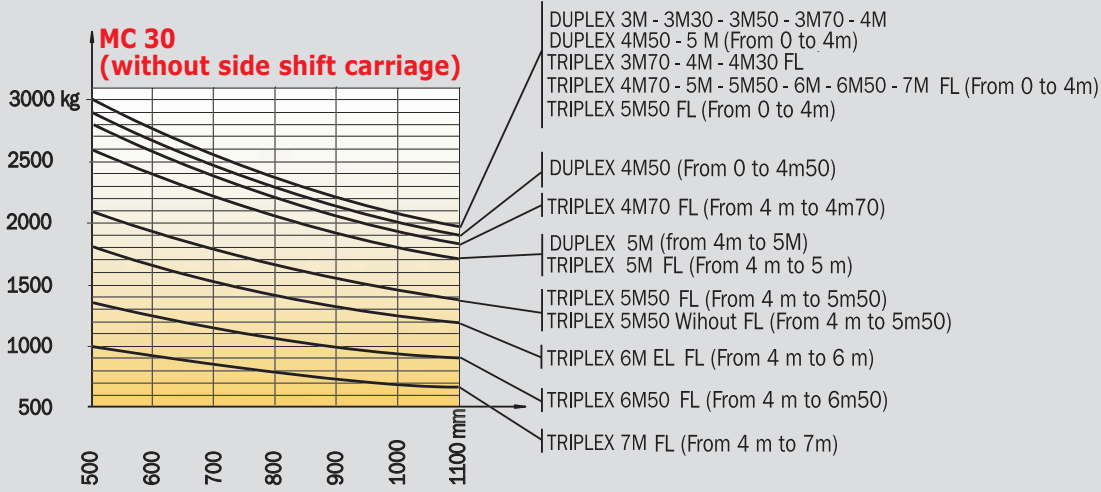
MC 30 Sliding masts

| MASTS | | LIFTING HEIGHT ON FORKS (mm) | OVERALL HEIGHT MAST LOWERED (mm) | FREE LIFT ON FORKS (mm) | OVERALL HEIGHT MAST EXTENDED (mm) | HEIGHT AT MAX. CAPACITY (mm) | | CAPACITY AT MAX. HEIGHT (kg) | | MAST TILTING ANGLE Front/Rear |
|--------------------------|--------|------------------------------|----------------------------------|-------------------------|-----------------------------------|------------------------------|-----------------------------|------------------------------|-----------------------------|-------------------------------|
| | | | | | | With side shift carriage | Without side shift carriage | With side shift carriage | Without side shift carriage | |
| DUPLEX TOTAL VISIBILITY | 3.00 m | 3045 | 2555 | - | 4055 | 3000 | 2700 | 3000 | 3000 | 6°/10° |
| | 3.60 m | 3645 | 2855 | - | 4655 | 3600 | 2700 | 3000 | 3000 | 6°/10° |
| | 4.00 m | 4045 | 3055 | - | 5055 | 4000 | 2700 | 3000 | 3000 | 6°/10° |
| | 4.50 m | 4545 | 3405 | - | 5655 | 4000 | 2410 | 2700 | 2700 | 6°/10° |
| TRIPLEX TOTAL VISIBILITY | 4.50 m | 4545 | 2470 | - | 5470 | 4500 | 2410 | 2700 | 2700 | 6°/10° |
| | 5.40 m | 5445 | 2860 | - | 6460 | 3600 | 1600 | 1750 | 1750 | 6°/10° |
| | 6.75 m | 6795 | 3330 | - | 7830 | 4500 | 900 | 1000 | 1000 | 6°/10° |
| TRIPLEX FREE LIFT | 4.55 m | 4595 | 2320 | 1450 | 5420 | 1450 | 2410 | 2700 | 2700 | 6°/10° |

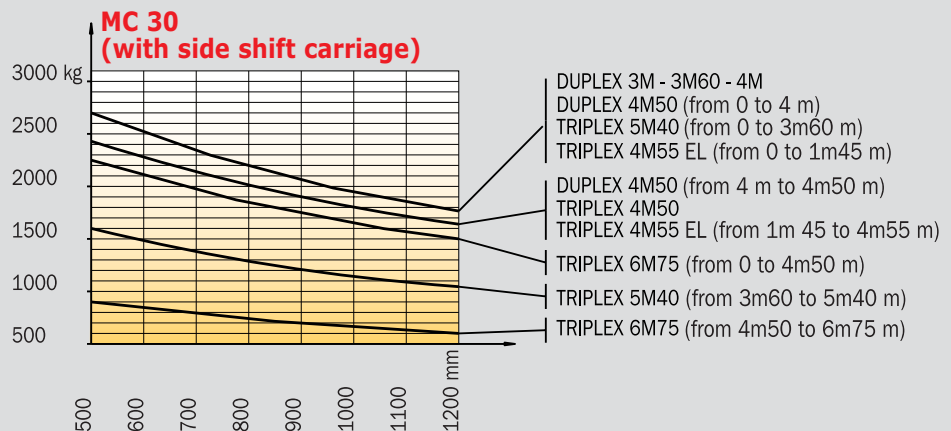
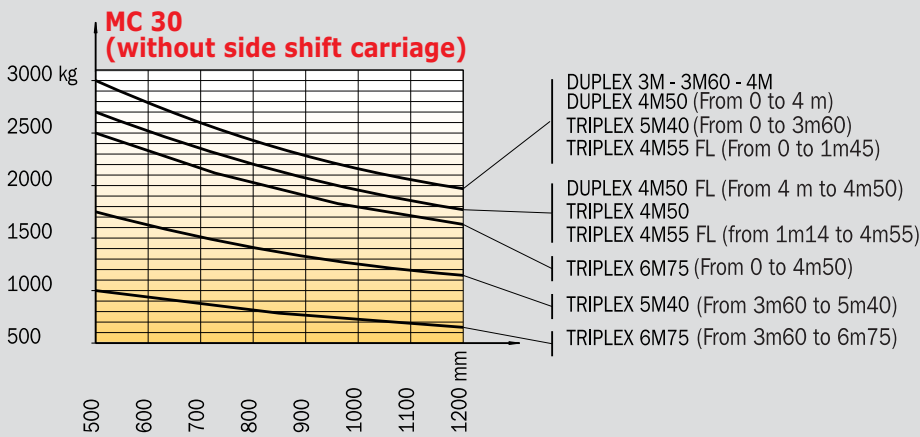
MC 30 Tyres

| Standard | | Option | | |
|---|---|---|---|---|
| Front | Rear | Front | Rear | Rear |
| Mixed | Industrial | Farming | Industrial | Industrial |
| 14,5 R 20 MPT 80 Tubeless 18 PR - 143 G/J | 10 R 17,5 134 M G291 | 375/75 R 20 XM 27 Tubeless 155 A2/142 B | 10 R 17,5 LDR Tubeless 134/132 L | 10 R 17,5 LSR Tubeless 134/132 L |
| Tyre width (mm) | | | | |
| 350 | 250 | 385 | 262 | 262 |
| Overall width (mm) | | | | |
| 1900 | 1815 | 1935 | 1827 | 1827 |
|  |  |  |  |  |


MC 30 with roller mast load chart




MC 30 with sliding mast load chart




MC 30


 **Load capacity**3000 kg
At 500 mm load center


 **Standard lifting height**3.70 m
Speed unladen/laden (m/s)
Lifting0.57/0.54
Lowering.....0.48/0.50

 **Tyres**
Front.....14.5 R 20 MPT 80
Tubeless 18 PR 143 G/J
Rear10 R 17.5 134 M G 291


 **Forks (mm)**
Length1200
Width x thickness.....125x40


 **Brakes hydraulically operated oil-immersed multidiscs**

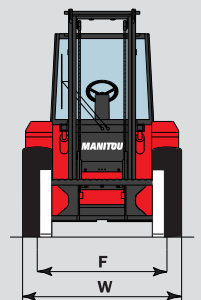
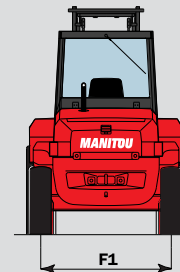
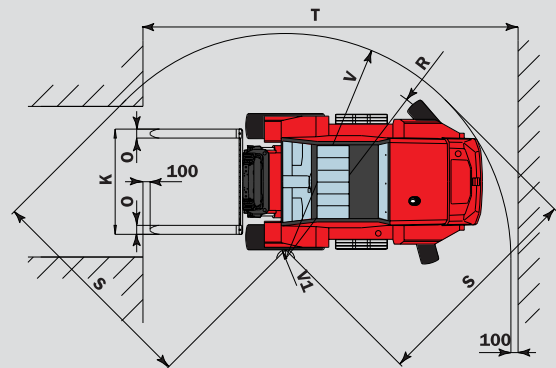
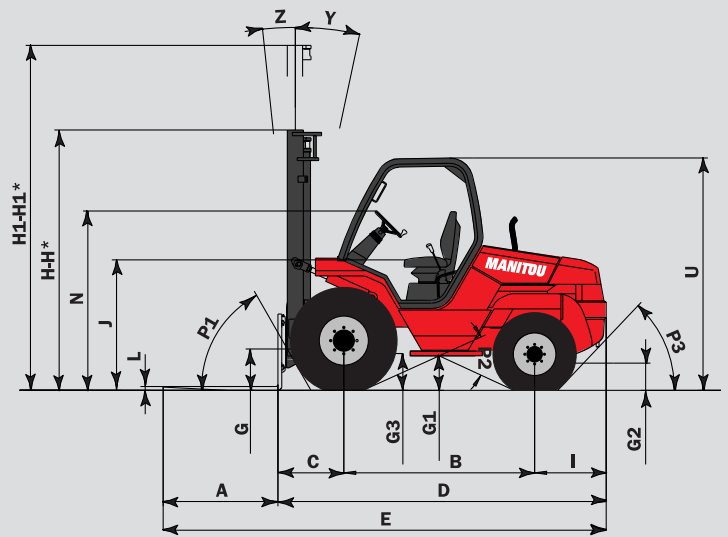
 **PERKINS engine**
Type1104C 44
Capacity4 cyl. 4400 cm³
Rated speed.....2200 tr/mn
Power at 2300 t/mn.....61,5 Kw (84 HP)
(ISO/TR 14396)
Maximum torque302 Nm at 1400 tr/mn
Direct injection
Water cooling

 **Transmission**.....Torque convertor
Electro hydraulic reversing shift
4 speeds forward and reverse
Maximum travel speed24 km/h
Hydraulic differential lock

 **Hydraulics**
Main pump
Gear type185 bar/89 l./mn
Flow divider with priority to steering
gear type128 bar/89 l./mn

 **Capacities**
Cooling system13 l
Engine oil.....8,5 l
Hydraulic oil64 l
Transmission oil.....15,5 l
Fuel tank.....85 l

 **Weight (with mast and forks)**5090kg



| | Roller mast | Slide mast |
|-----|-------------|------------|
| A | 1200 | 1200 |
| B | 1995 | 1995 |
| C | 697 | 715 |
| D | 3442 | 3460 |
| E | 4642 | 4660 |
| F | 1550 | 1550 |
| F1 | 1564 | 1564 |
| G | 425 | 385 |
| G1 | 385 | 385 |
| G2 | 300 | 300 |
| G3 | 380 | 380 |
| H | 2715 | 2855 |
| H1 | 4745 | 4655 |
| H* | 2205 | 3055 |
| H1* | 4662 | 4055 |
| I | 750 | 750 |
| J | 1400 | 1400 |
| K | 1470 | 1320 |
| L | 40 | 45 |
| N | 1880 | 1880 |
| O | 125 | 125 |
| P1 | 60,5° | 60,5° |
| P2 | 49° | 49° |
| P3 | 46,5° | 46,5° |
| R | 2910 | 2910 |
| S | 3060 | 3060 |
| T | 5030 | 5285 |
| U | 2460 | 2460 |
| V | 3210 | 3210 |
| V1 | 300 | 300 |
| W | 1900 | 1900 |
| Y | 12° | 10° |
| Z | 6° | 6° |

mm

Standard equipment

- Torque converter transmission
- Driver protector with tinted front windscreen and rear window
- Skai seat
- Front and rear wipers
- Left-hand outside rear-view mirror
- Steering wheel with reverse control
- Hydraulic differential lock
- Load damper
- ...

Options

- Enclosed cab with tinted windows and heating front and rear wipers, front windscreen washer
- Revolving light
- Audible back-up warning signal
- Road lighting
- Work lighting
- Slide masts
- Miscellaneous accessories, such as buckets, sideshift carriage, grabs, etc.

This equipment described in this leaflet may be standard, optional, or unavailable, depending on the versions. For more details, contact your MANITOU dealer.

Manitou, material handling world leader

Inventor of the rough terrain forklift truck, Manitou offers today the most comprehensive range to meet all specific handling and personal lifting requirements :



Telescopic trucks

MANISCOPIC

Rough terrain and semi industrial masted trucks

MANITOU



Access equipment

MANIACCESS

Compact telescopic handler

Twisco



Truck mounted forklifts

MANITRANSIT

Backhoe/Loader with telescopic boom

MANIHOE

Swinging arm and articulated wheeled loaders

MANILOADER

Electric pallet trucks and electric stackers

MANILEC



This equipment described in this leaflet may be standard, optional, or unavailable, depending on the versions. For more details, contact your MANITOU dealer.

A network of skilled professionals at your service

With a network of 500 service and parts centres in more than 100 countries, Manitou provides an efficient after-sales support based on the expertise of 2000 factory trained technicians.

MANITOU BF SA

B.P. 249 - 44158 Ancenis Cedex - France
Tél. : 33 2 40 09 10 11 / Export Department Fax : 33 2 40 09 10 97
www.manitou.com

700128EN - BE 100 Ind C

