

# Twisco

**SLT 415**  
*Evolution*

## The Pocket Telehandler

- Transportable
- Compact
- Manœuvrable
- Rough terrain




 **MANITOU**

# Twisco SLT 415 Evolution


 **Lifting capacity** .....1500 kg  
(500 mm load centre)


 **Lifting height** .....3.98 m  
**Max. front reach**.....2.14 m

 **Tyres**  
Front and rear.....10 x 16,5 10 PR SKS  
Option HT :.....tyres 31 x 15,5 - 15

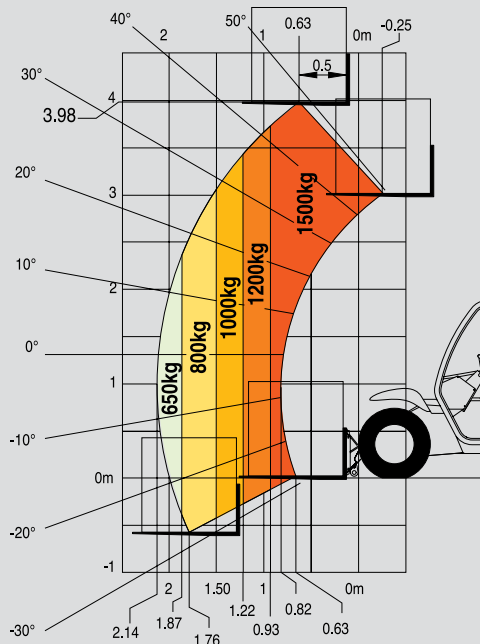
 **Perkins 404 C22 engine**  
Capacity .....4 cyl. - 2216 cm3  
Power .....(ISO/TR 14396) 50 HP/38 kw  
Rated speed.....2800 r.p.m  
Max. torque .....143 Nm at 1800 r.p.m  
Cooling .....water

 **Transmission** .....hydrostatic  
3 wheel drive  
Reversing shift on FNR lever  
Travel speed : .....13.5 km/h  
Parking brakes .....on front wheels

 **Hydraulic**  
Main geared pump .....250 bar/40 L/mn

 **Weight (with forks)** .....2520 kg  
**Overall width**.....1662 mm  
**Overall height**.....1900 mm  
**Turning radius (rear wheel axle)**.....2225 mm  
**Turning circle** .....2380 mm  
**Drawbar pull(laden)**.....1890 daN  
**Ground clearance** .....258 mm

This publication in no way constitutes an offer and the company reserves the right to alter specification without prior notice.  
The MANITOU models presented in this brochure can be supplied complete with optional equipment attachments.



Rough terrain standard EN 1459 B



"FNR" lever



Transportable